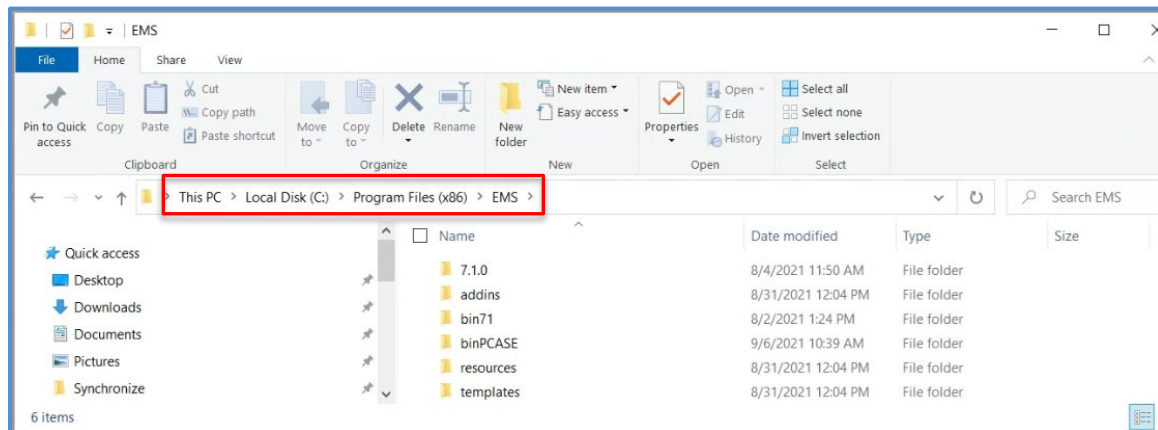


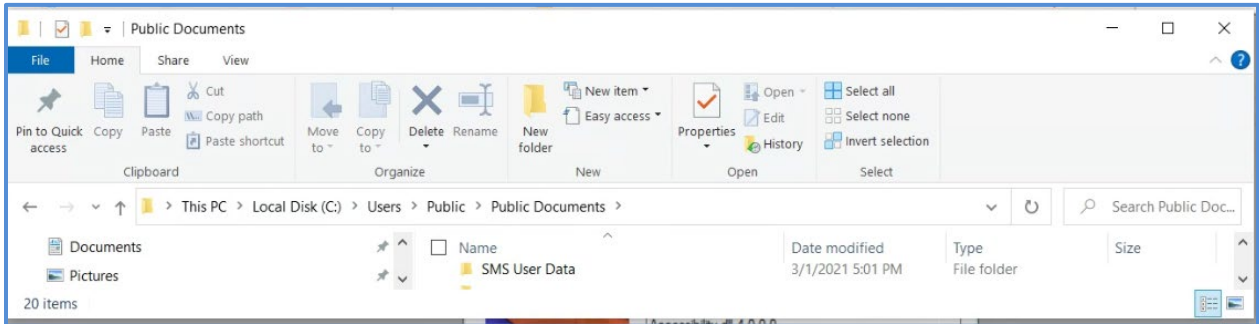
## PCASE Installation and Configuration Guide

1. The PCASE installation file is available at the link below.  
<https://transportation.erd.c.dren.mil/pcase/software.aspx>.
2. Download, then open the zip file and extract the PCASE 7.0.x Setup.exe file. As a cybersecurity measure, the administrator has the option of running a hash algorithm on the setup.exe before beginning the install. The zip file contains a .txt file with the algorithm, SHA256 and the hash code. This information is also posted on the download site above as a check.
3. Installation requires administrator privileges, and it is assumed PCASE is being installed on a NIPR system.
4. Program Default Install: The PCASE application installs to C:\Program Files (x86)\EMS folder. We recommend the default install location. If there is a need to change the install location, contact the PCASE Program Manager, George VanSteenburg 402-326-5646. Note that PCASE provides an option to install SQL Local DB which is a single user stripped down version of SQL Server Express. Local DB is required when a user wants to operate PCASE in 64 bit mode.



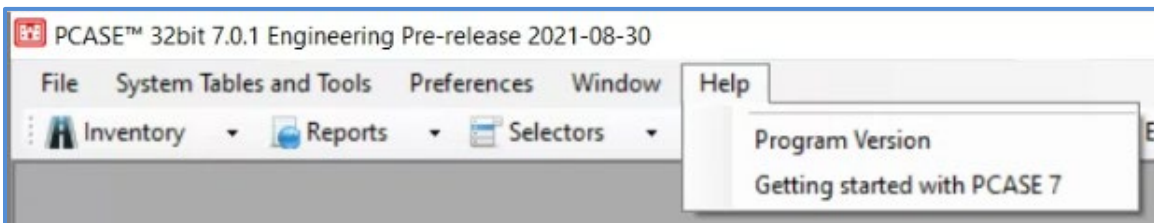
5. Silent Install: Use the options below when doing a silent install.
  - a. Use flags /qn and /quiet to install silently.
  - b. If this does not work, use /exenoui /qn. Note that the installer also needs elevated privileges for this option.
6. Default Data Folder: If you are prompted to define the user data folder locations, we recommend the default user data folder location C:\Users\Public\Documents\SMS User Data.
  - a. If the user data folder is set to a location that's not writable by all users, this can cause issues when the computer is given to another individual or the computer is shared.
  - b. The user data folder is where the database data and maps are stored. Thus, any user will need read/write privileges for the directory and the assumption is that a database created in this folder is publicly releasable unclassified information.

- c. Paver uses a configuration file to remember the user's specified 'User data folder'. It is located at **C:\ProgramData\iitcorp\WGServerConfig.xml.cy** (Note: C:/ProgramData is the operating system's recommended location to store application configuration that should apply to all user accounts on a computer.)

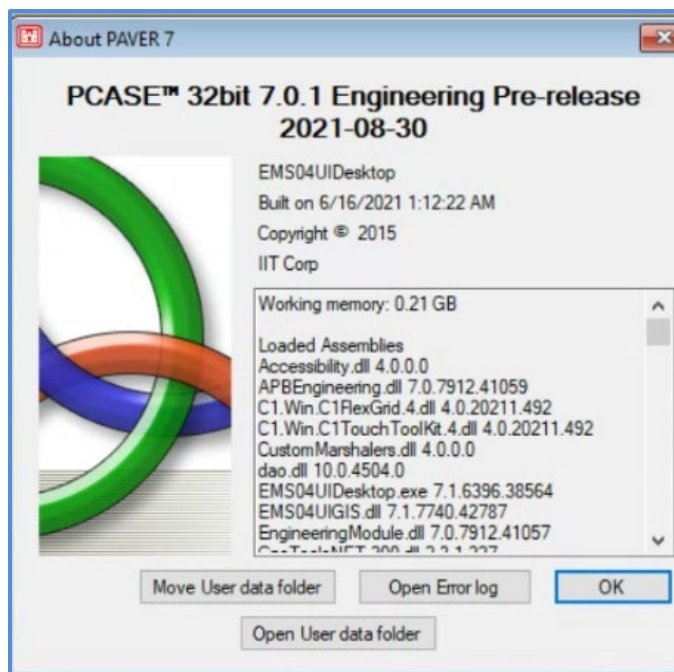


- 7. **Controlled Unclassified Information (CUI):** If a database is considered CUI, change the data directory to a location that the user has read/write permissions to and that is not publicly accessible. The process for making this change is outlined below.

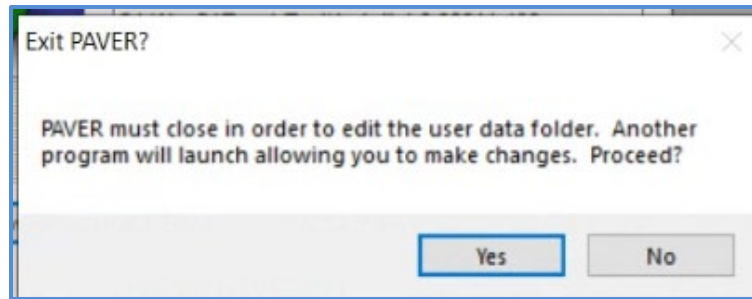
- a. In PCASE, go to Help>>Program Version



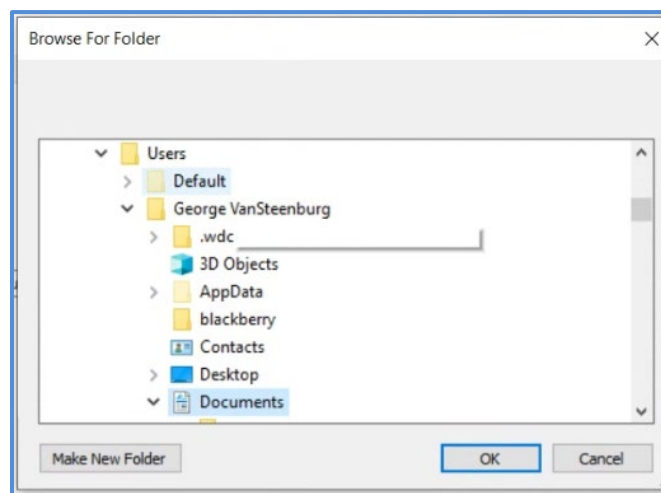
- b. Select Move User Data Folder



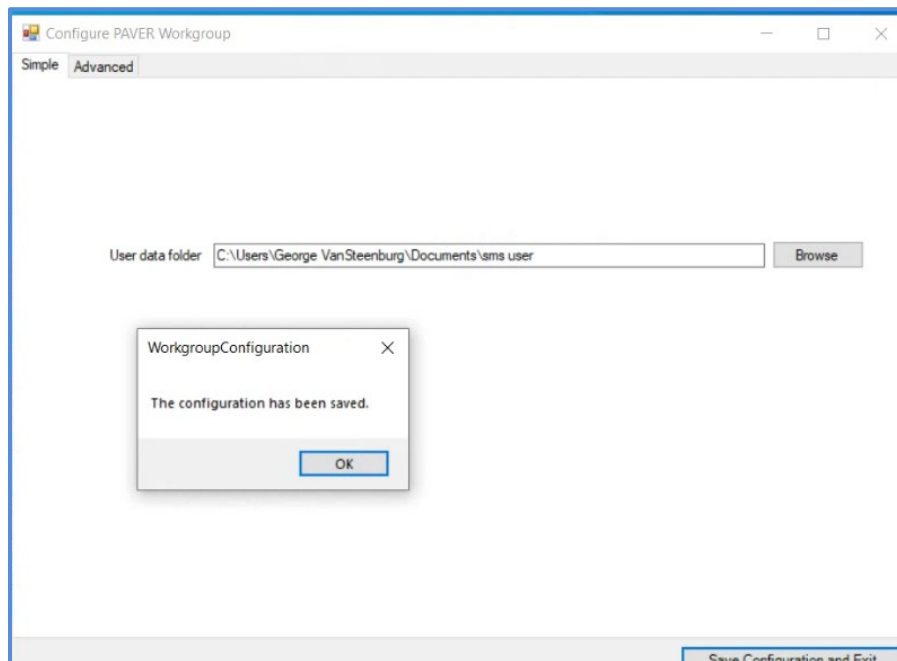
c. Select Yes



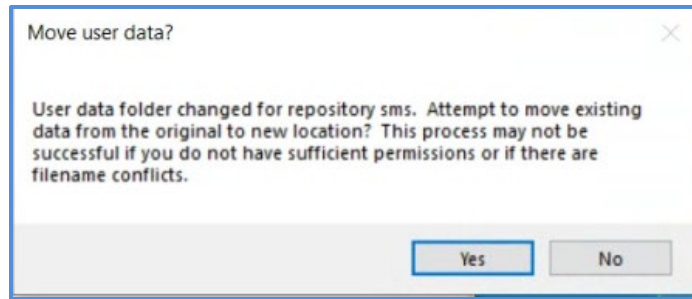
d. Brows to a location with read/write permissions accessible to the user e.g., C://Users/user name/documents and create and SMS folder there.



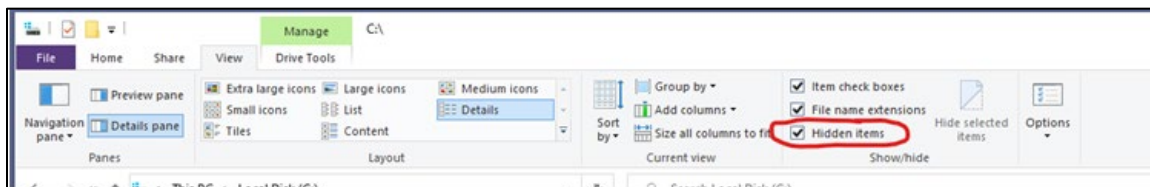
e. Select Ok (screen shot above), select Save Configuration and Exit, select Ok



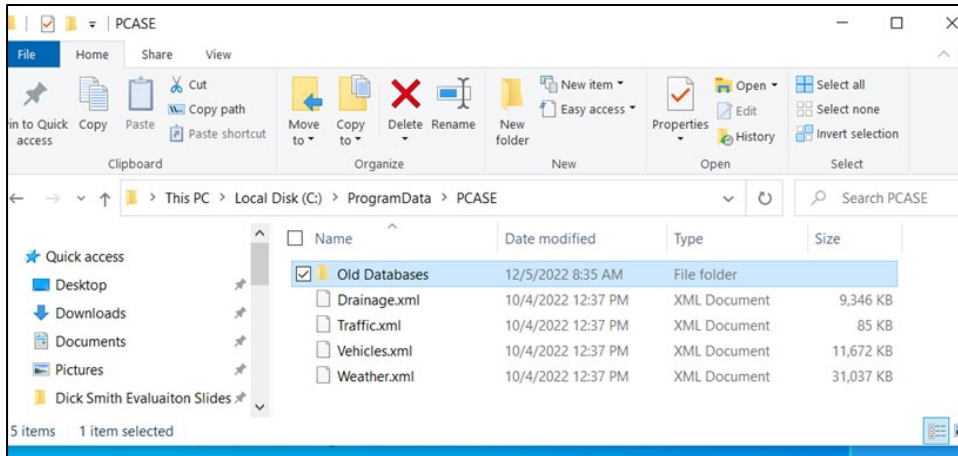
- f. When prompted to Move User Data, **select NO**



- g. You get a message, this tool will now close, select Ok
8. File naming: When creating a database following the “Getting Started” guidance, the recommended best practice is to include the classification level in the name of the file and whenever exporting a database.
9. Report Generation: PCASE reports use excel templates without any classification markings based on the assumption that all data is unclassified, publicly releasable. If the information in the individual database in CUI, it is the user’s responsibility to properly mark any reports generated by PCASE at the appropriate classification level. The user will add header and footer with the appropriate classification markings.
10. Updating PCASE 7.0 Vehicle, Traffic, Climate, and Precipitation Databases (.xml files). Note that updating these .xml files requires administrator rights
- a. Exit PCASE.
  - b. Go to C:/ProgramData/PCASE
  - c. If you don’t see the Program Data folder, select the view tab “View” tab in Windows Explorer and check the “Hidden items” box.



- d. Create a new folder for “Old Databases” in C:/ProgramData/PCASE and move the .xml file you want to replace to the Old Databases folder. Note this is just a precaution in case you encounter any issues.



- e. Go to <https://transportation.erd.cdn.mil/pcase/software.aspx> and download the .xml file you wish to update (Vehicles, Traffic (standard traffic patterns), Weather (climate data), or Drainage (precipitation data).
- f. save the new .xml file from the site to C:/ProgramData/PCASE.
- g. Once you open PCASE, the new database(s) will be available
- h. Note: this procedure will not affect any custom vehicles you may have. These are stored at <User Data Directory>\Shared\System\PCASE\Custom Vehicles. You can determine your User Data Directory by selecting Help>>Program Version in PCASE and then selecting the Open user data folder button.