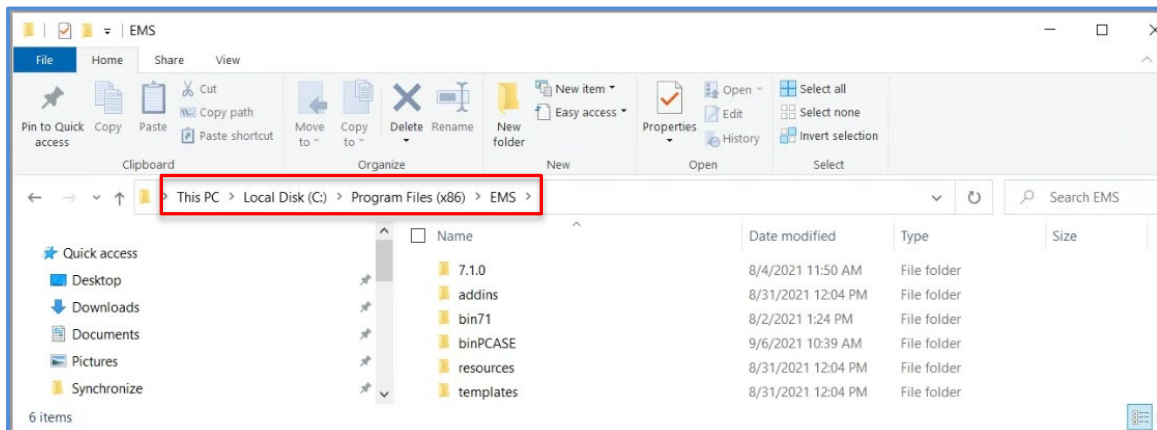


## PAVER™ Installation and Configuration Guide

1. The PAVER™ installation file is available at the link below.  
<https://transportation.erd.c.dren.mil/paver/Downloads.htm>.
2. Download, then open the zip file and extract the PAVER™ 7.1.x Setup.exe file. As a cybersecurity measure, the administrator has the option of running a hash algorithm on the setup.exe before beginning the install. The zip file contains a .txt file with the algorithm, SHA256 and the hash code. This information is also posted on the download site above as a check.
3. Installation requires administrator privileges, and it is assumed PAVER™ is being installed on a NIPR system.
4. Program Default Install: The PAVER™ application installs to C:\Program Files (x86)\EMS folder. We recommend the default install location. If there is a need to change the install location, contact the PAVER™ Program Manager, George VanSteenburg 402-326-5646. Note that PAVER™ provides an option to install SQL Local DB which is a single user stripped down version of SQL Server Express. Local DB is required when a user wants to operate PAVER™ in 64-bit mode.



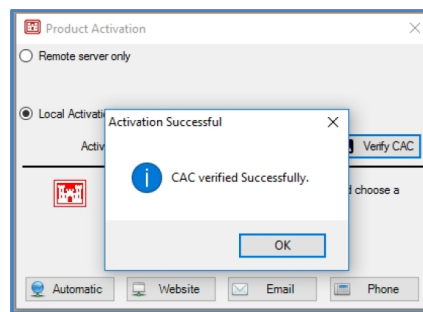
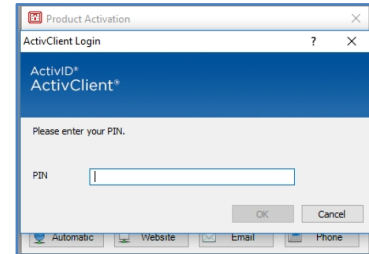
5. Silent Install: Use the options below when doing a silent install.
  - a. Use flags /qn and /quiet to install silently.
  - b. If this does not work, use /exenoui /qn. Note that the installer also needs elevated privileges for this option.
6. **Installing PAVER™ for the first time:** If you are a Department of Defense (DoD) employee or contractor with a CAC and are installing PAVER™ for the first time, when prompted to activate PAVER™, select the Verify CAC option. If you are installing PAVER™ on a computer without a CAC reader, you will need to request an activation code from your Service PAVER™ POC or from the Transportation Systems Center PAVER™ POC listed on the PAVER™ Web Page and follow the instructions in the PAVER™ User Manual.



### CAC Activation

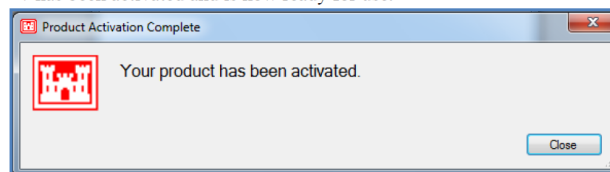
When activating PAVER 7™ with a CAC:

- Ensure the CAC is in the reader.
- Click Verify CAC, and a list of certificates will be shown. Click OK.
- User will be prompted to enter a PIN, and click OK.

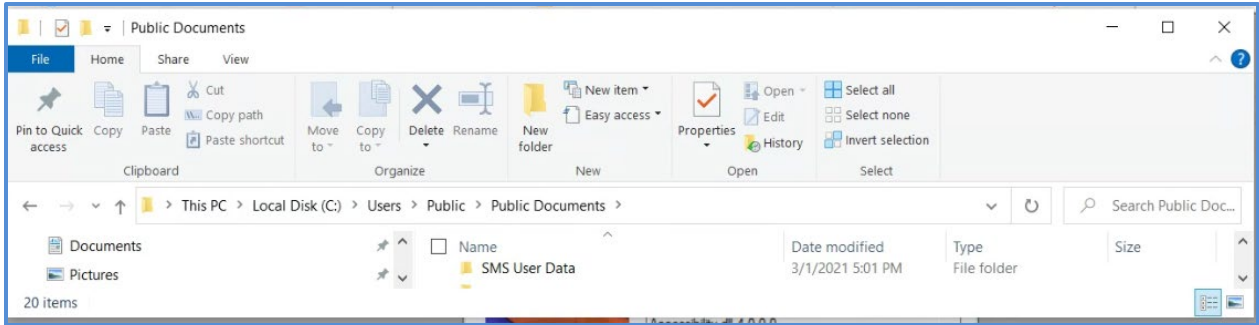


### Activation Complete:

If a valid activation code has been entered the screen below will be shown indicating that PAVER™ 7 has been activated and is now ready for use.

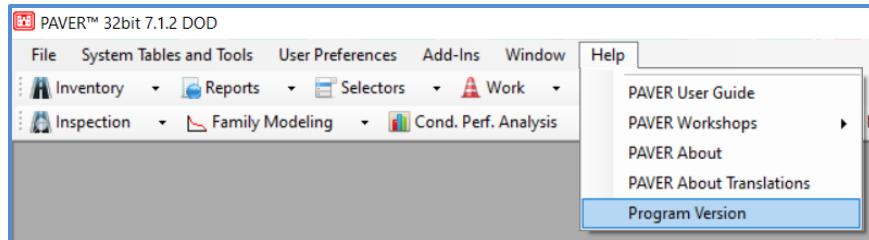


7. Default Data Folder: If you are prompted to define the user data folder locations, we recommend the default user data folder location C:\Users\Public\Documents\SMS User Data.
  - a. If the user data folder is set to a location that's not writable by all users, this can cause issues when the computer is given to another individual or the computer is shared.
  - b. The user data folder is where the database data and maps are stored. Thus, any user will need read/write privileges for the directory and the assumption is that a database created in this folder is publicly releasable unclassified information.
  - c. PAVER™ uses a configuration file to remember the user's specified 'User data folder'. It is located at **C:\ProgramData\iitcorp\WGServerConfig.xml.cy** (Note: C:/ProgramData is the operating system's recommended location to store application configuration that should apply to all user accounts on a computer.)

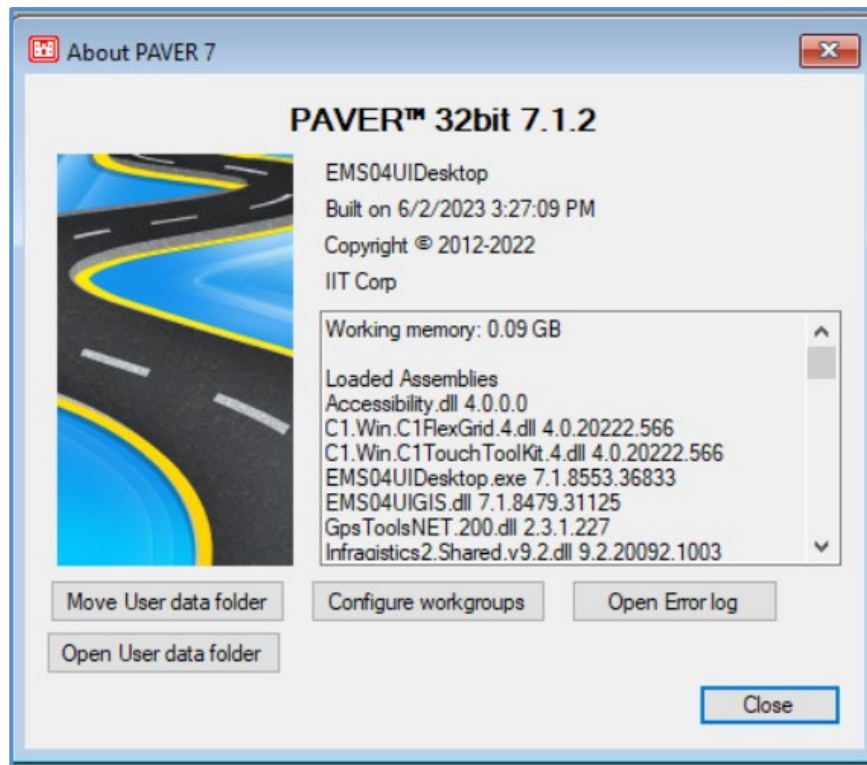


8. **Controlled Unclassified Information (CUI):** If the data in a database is considered CUI, change the data directory to a location only the user and administrator have read/write permissions to and is not publicly accessible. The process for changing the user data directory is outlined below. It is the host systems responsibility to ensure that successful and unsuccessful access attempts to access the information are audited and that the CUI is protected appropriately.

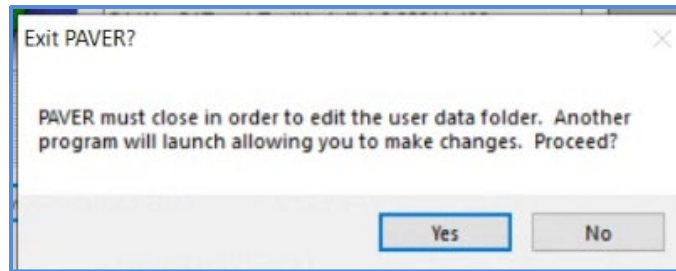
- a. In PAVER™, go to Help>>Program Version



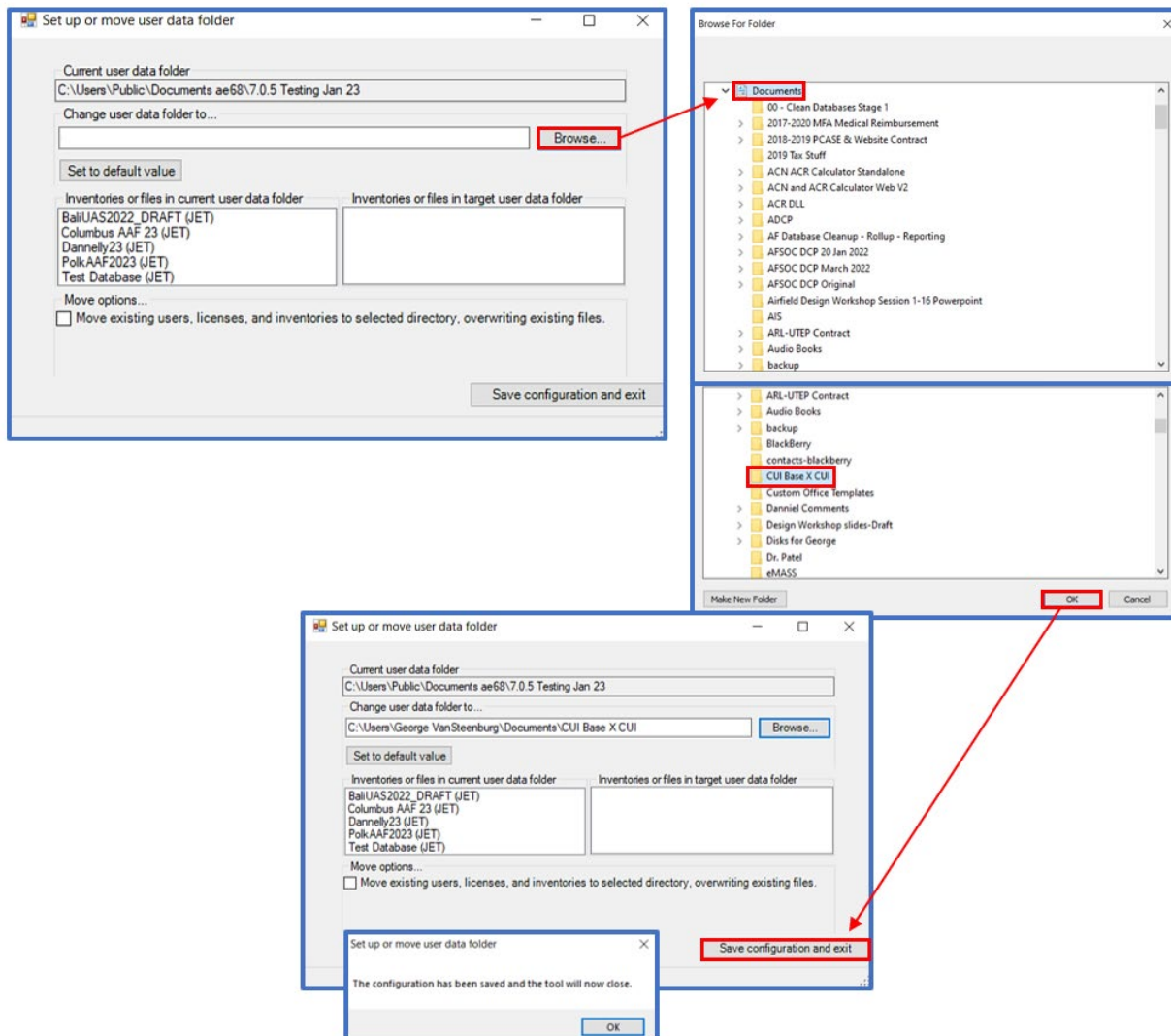
- b. Select Move User Data Folder



c. Select Yes

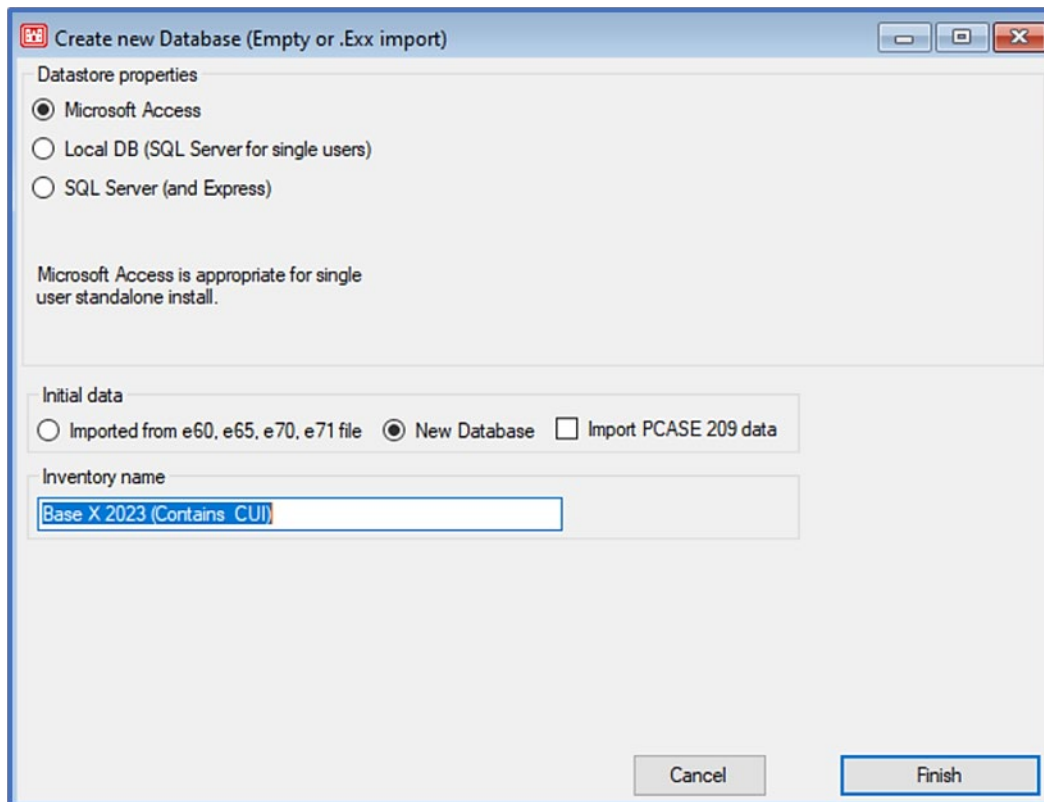


d. Browse to a location with read/write permissions accessible to the user e.g., C://Users/user name/documents and create and SMS folder there.



e. Select Ok (screen shot above), select Save Configuration and Exit, select Ok

9. Open PAVERTM and create a database following the User Manual Chapter 3 File Menu > New/Import. The recommended best practice is to include the classification level in the name of the file and whenever exporting a database.



10. Report Generation: PAVERTM reports use excel templates without any classification markings based on the assumption that all data is unclassified, publicly releasable. If the information in the individual database in **CUI**, it is the user's responsibility to properly mark any reports generated by PAVERTM at the appropriate classification level. The user will add a header and footer with the appropriate classification markings.